

Geographic Regions

DIFFERENT TYPES OF REGIONS

What is a region?

- ▶ A region is an area with one or more traits, characteristics, features that are common and make it different from surrounding areas.
- ▶ Regions are defined by
 - ▶ Scale
 - ▶ Physical characteristics
 - ▶ Human characteristics

Geographic Regions: *by definition*



- ▶ *There three types of regions*
 - ▶ *Formal regions are areas where a certain characteristic is found throughout.*
 - ▶ *Functional regions consist of a central place and the surrounding places affected by it.*
 - ▶ *Perceptual regions are defined by people's attitudes and feelings about areas.*

FORMAL REGION

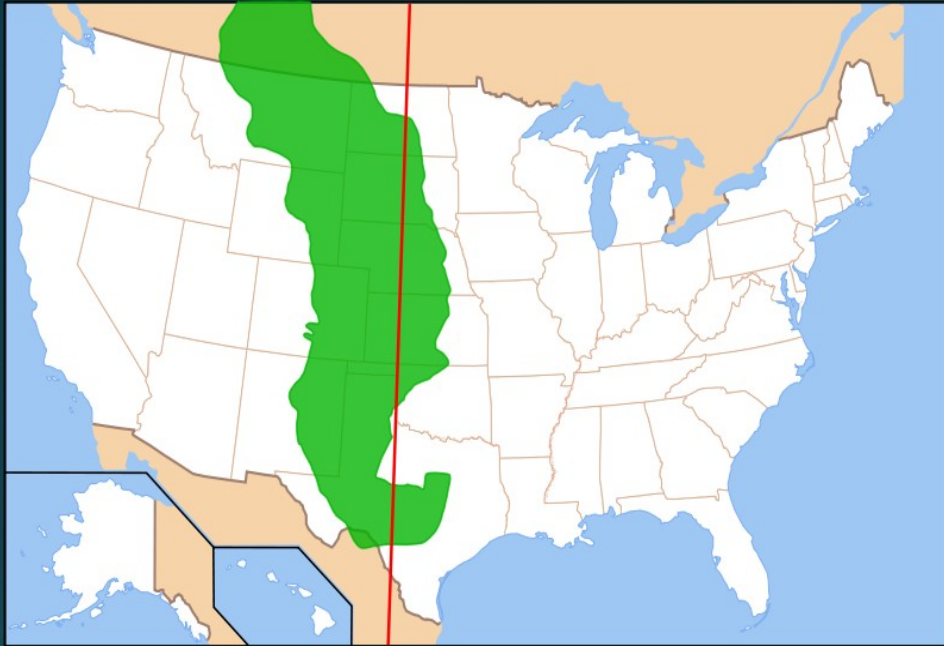
(also known as uniform region)

- ▶ Characterized by a **common** human property:
 - ▶ Language
 - ▶ Religion
 - ▶ Nationality
 - ▶ political identity or culture
 - ▶ common physical property
 - ▶ Climate
 - ▶ Landform
 - ▶ Vegetation
- ▶ **Defined by measures** of:
 - ▶ Population
 - ▶ per capita income
 - ▶ ethnic background
 - ▶ crop production
 - ▶ population density and distribution
 - ▶ Industrial production
 - ▶ mapping physical characteristics
 - ▶ Temperature
 - ▶ Rainfall
 - ▶ growing season

Formal Regions: Political



- ▶ Defined by common political identity.
- ▶ Political units: where all people are subject to same laws and government.
- ▶ Examples are:
 - ▶ States
 - ▶ Countries
 - ▶ Cities
 - ▶ Counties
 - ▶ Provinces



Formal Regions: Great Plains & the Pampas

- ▶ Great Plains - temperate (warm) grasslands and fertile soils
- ▶ Pampas - Argentina and southern South America: temperate (warm) grasslands and fertile soils



Formal Regions: Patagonia



- ▶ **Patagonia:**
Windswept plateau
south of the Pampas
- ▶ Desolate
- ▶ Dry
- ▶ Cold

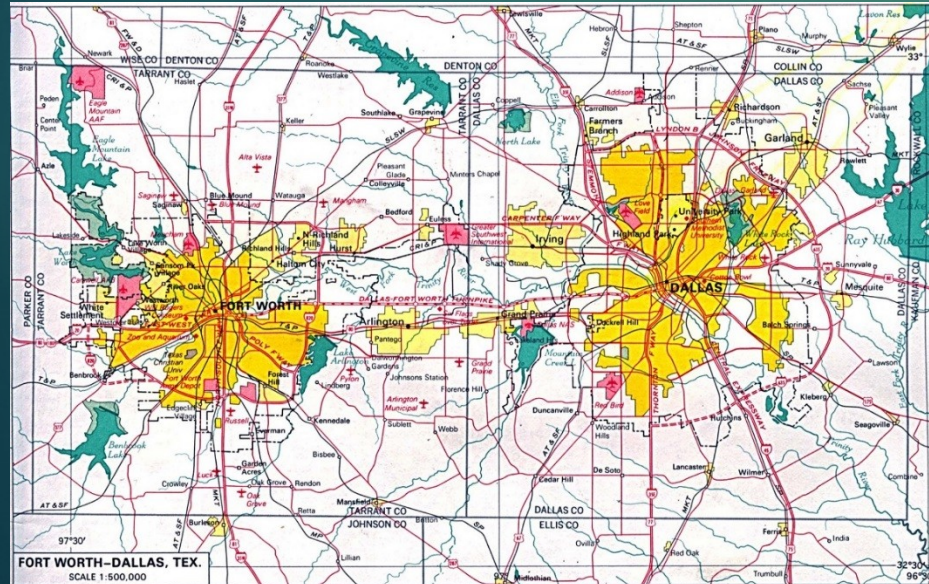
Formal Regions: Chinatown (San Francisco, CA)



- **Chinatown** - San Francisco (other big cities in USA) - Chinese people, restaurants, stores.



Functional Regions

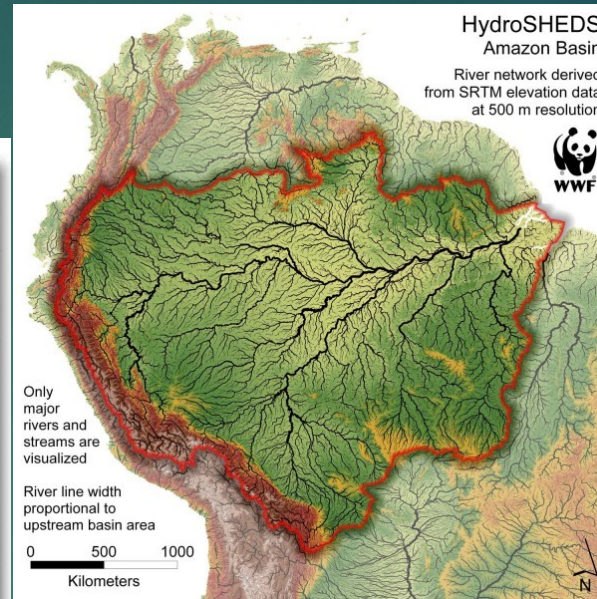


- ▶ Consist of a central place and the surrounding places affected by it.
- ▶ Often linked by the flow or movement of something
- ▶ I.e. - Dallas-Fort Worth TX Metropolitan Area = linked by a common airport
- ▶ Organized around a node or focal point with the surrounding areas linked to that node by:
 - ▶ transportation systems
 - ▶ communication systems
 - ▶ other economic associations involving such activities as manufacturing and retail trading.

Functional regions:

- ▶ Defined by a set of activities, connections or interactions
 - ▶ For example:
 - ▶ Newspaper circulation area
 - ▶ Commuter traffic patterns
 - ▶ Subway systems in NYC, Boston, etc.
 - ▶ Highway systems

Functional Regions: Amazon River Drainage Basin



- ▶ **“Basin”** - Bowl or dish-shaped geographic feature. Water runs to and settles in the middle
- ▶ **Amazon River Basin** - > 80 in. rain/yr., > 80° F constant temperatures

Functional Region: The Andean Highlands

- ▶ The Andes Mountains and surrounding highlands are a functional region

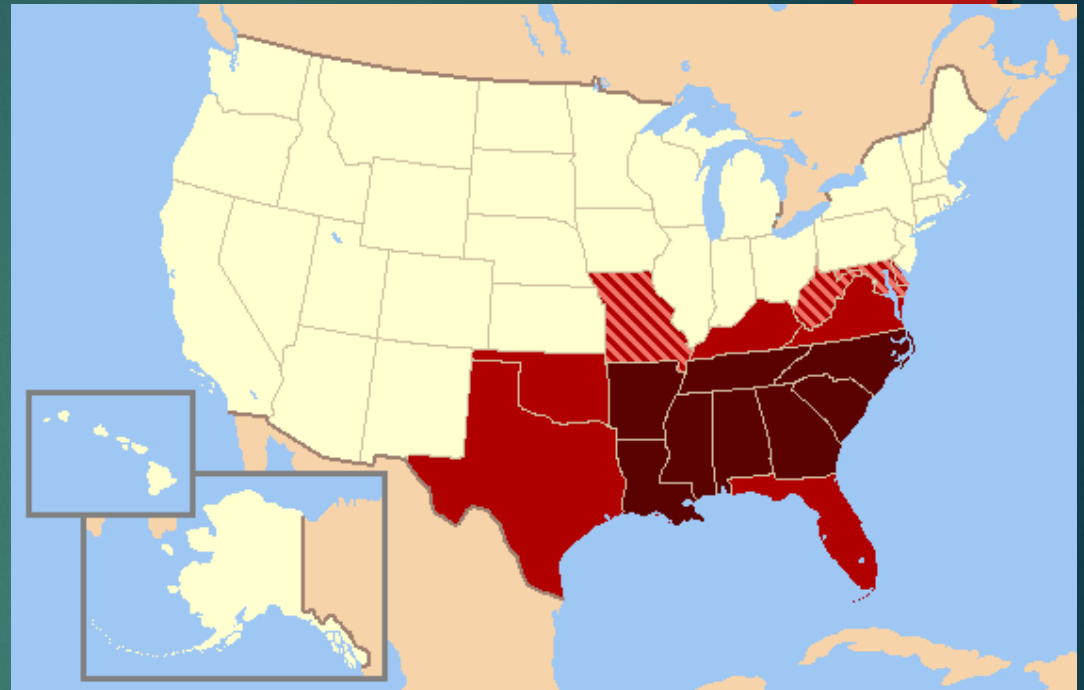




NYC Subway – a functional region

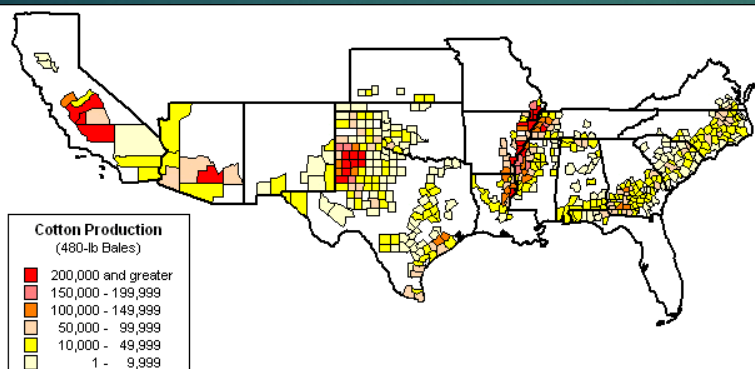
Perceptual Regions

- ▶ Defined by people's attitudes and feelings about areas.
- ▶ Sometimes called "vernacular" regions
- ▶ May vary by individual perceptions



The American South:
sometimes known as

- * "Heart of Dixie"
- * "Dixie"
- * "Cotton Belt"



PERCEPTUAL REGIONS

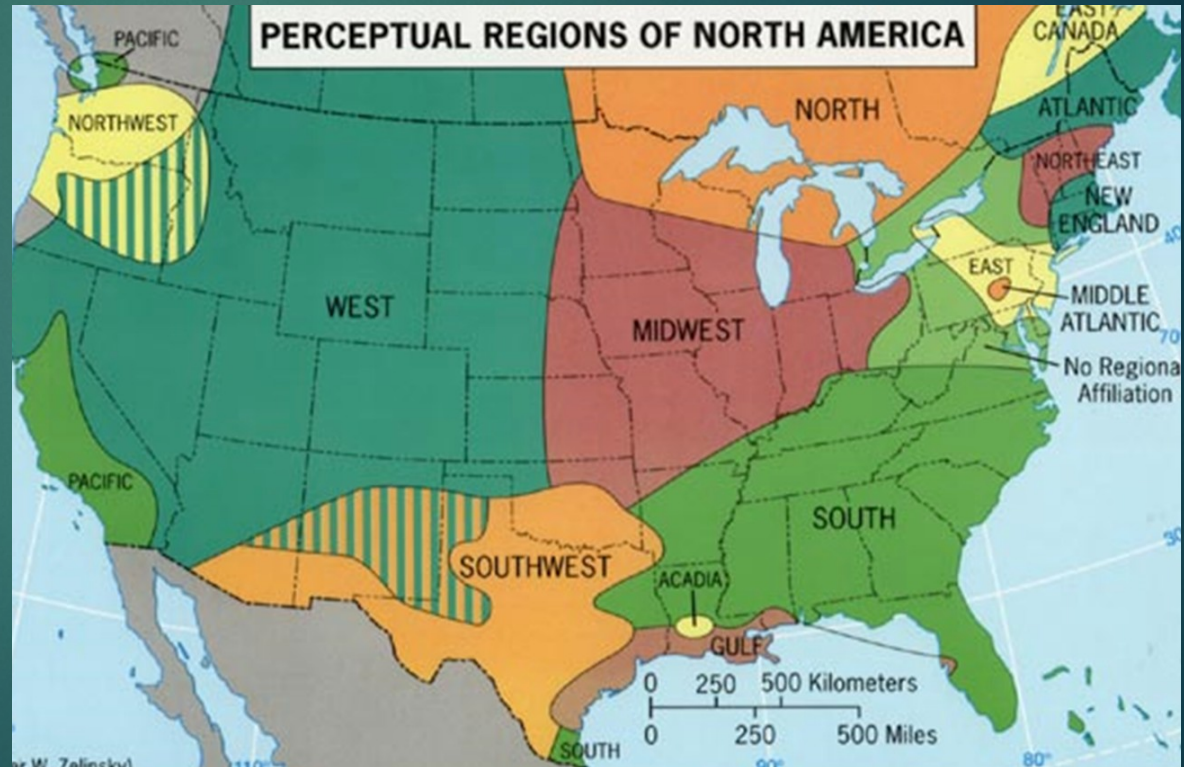


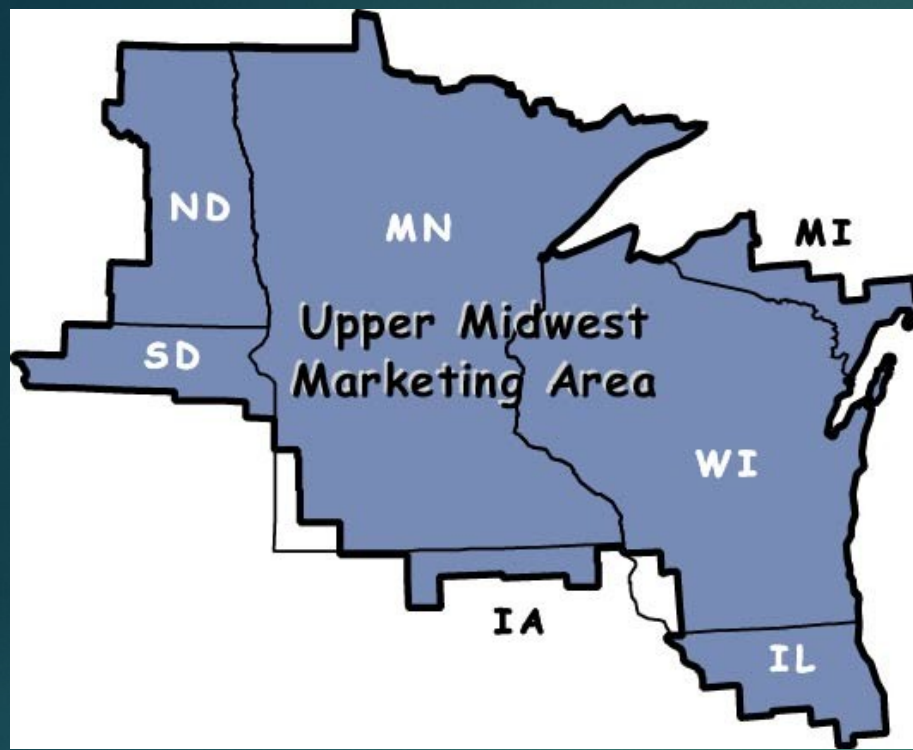
- ▶ *Reflect people's mental maps.*
- ▶ *Often use stereotypes that may be inappropriate or incorrect.*
- ▶ *Do not have precise borders.*

Let's look at our own perceptions, stereotypes and attitudes

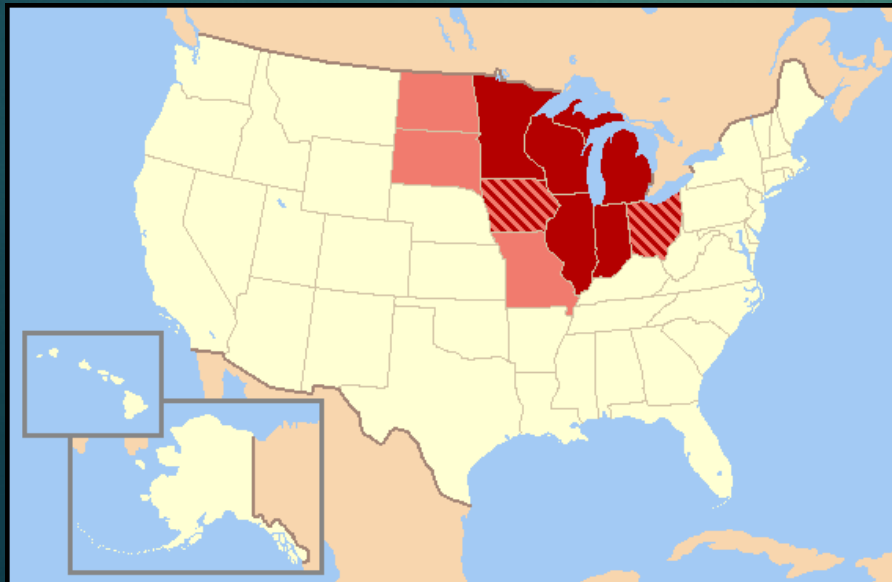
What's the first thing that comes to your mind.....

- ▶ Southern California
- ▶ The South or Dixie
- ▶ Iraq
- ▶ New York City
- ▶ Utah
- ▶ Detroit





Perceptual Regions: The Upper Midwest





Perceptual Regions: World Cities

- ▶ *Paris = City of Lights*
- ▶ *Chicago = Windy City*



Perceptual Regions: Rio de Janeiro, Brazil: The “Marvelous City”



Perceptual Regions:

St. Louis Missouri: “Gateway to the West”



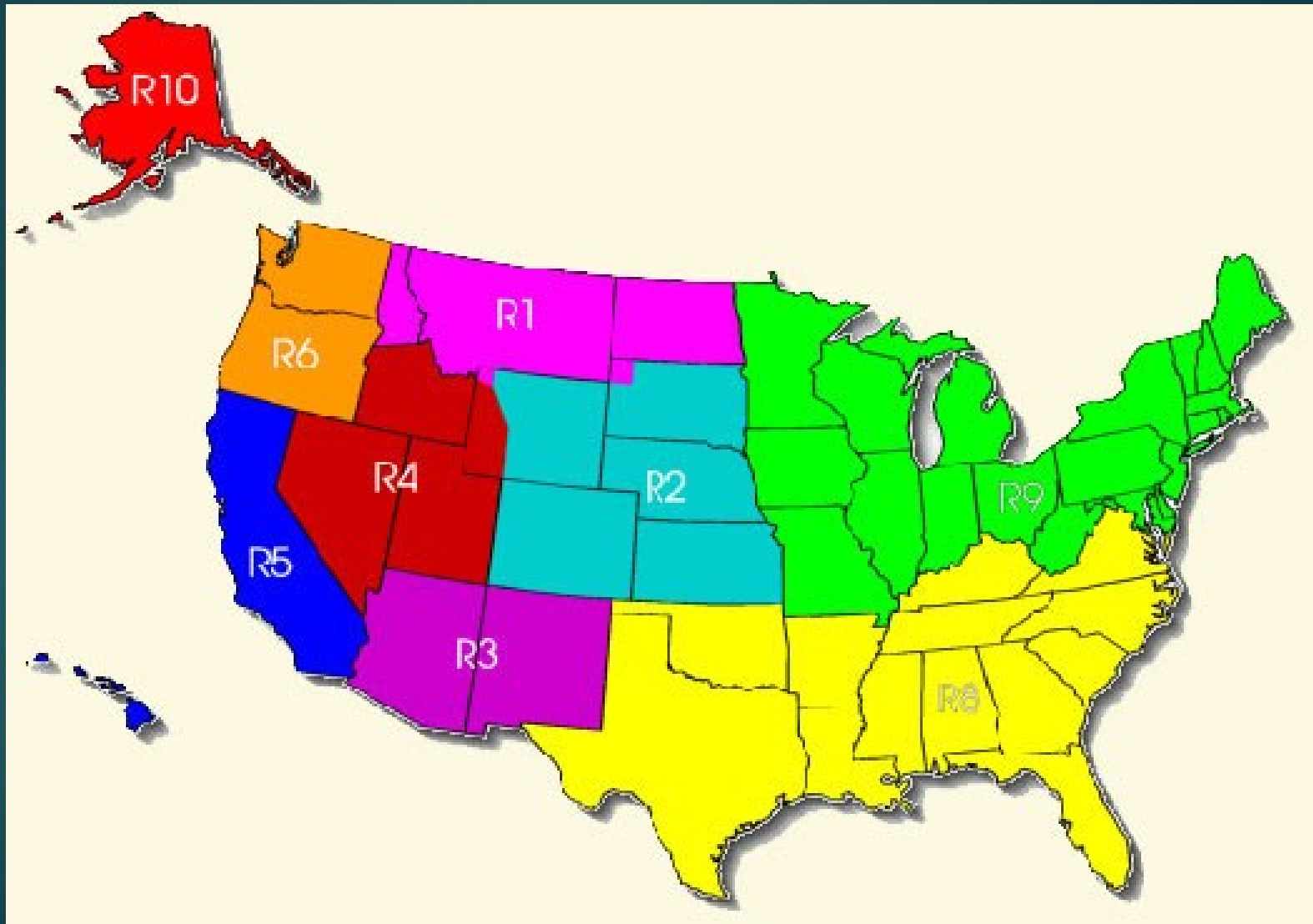
Perceptual Regions: *Mexico City, Mexico: “The City of Palaces”*

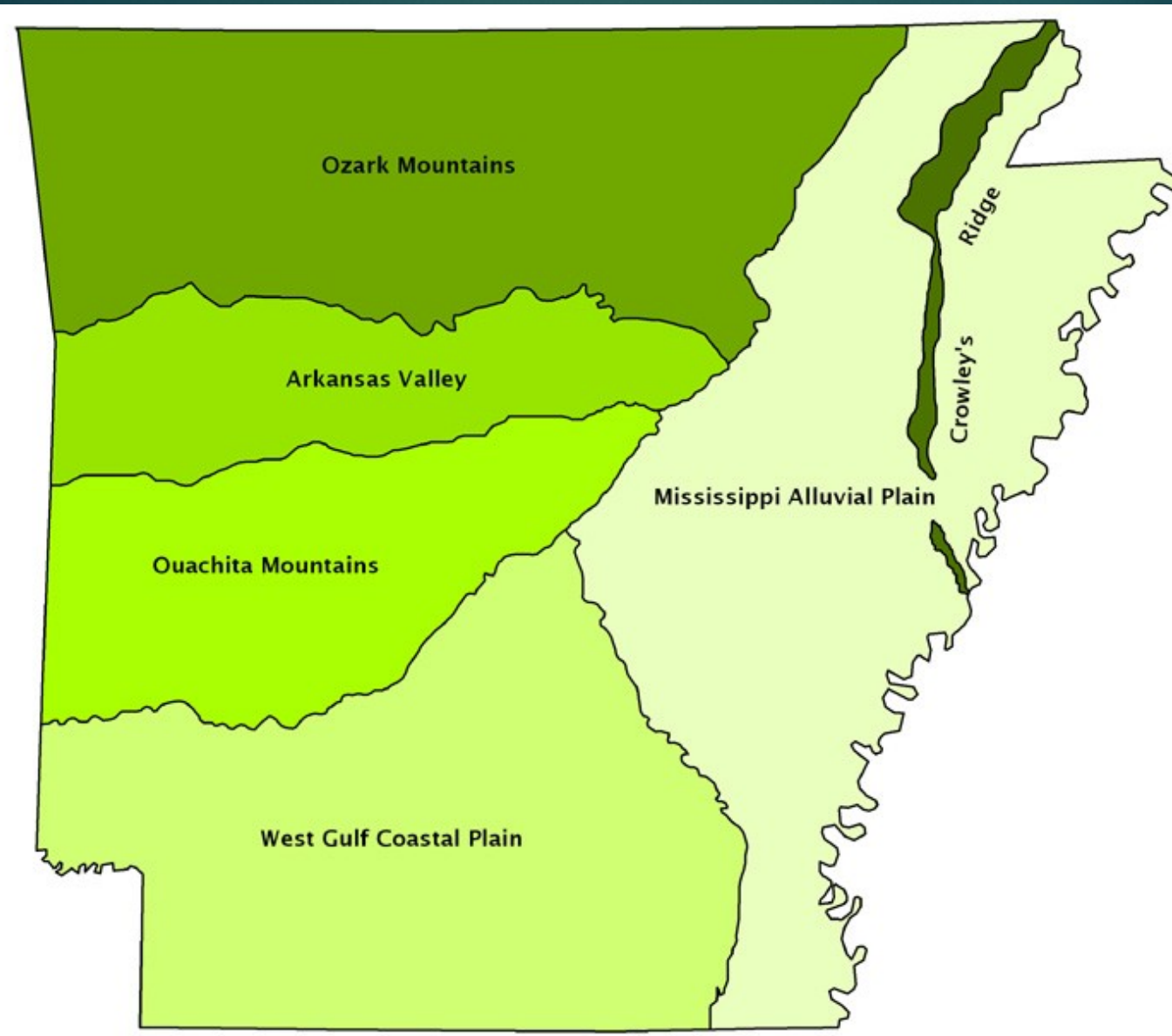


Perceptual Regions: *Tibet: “The Rooftop of the World”*



What regional map is this?





THE AMERICAN NATIONS TODAY





What regional map is this?

What regional map is this?



Texas Regions